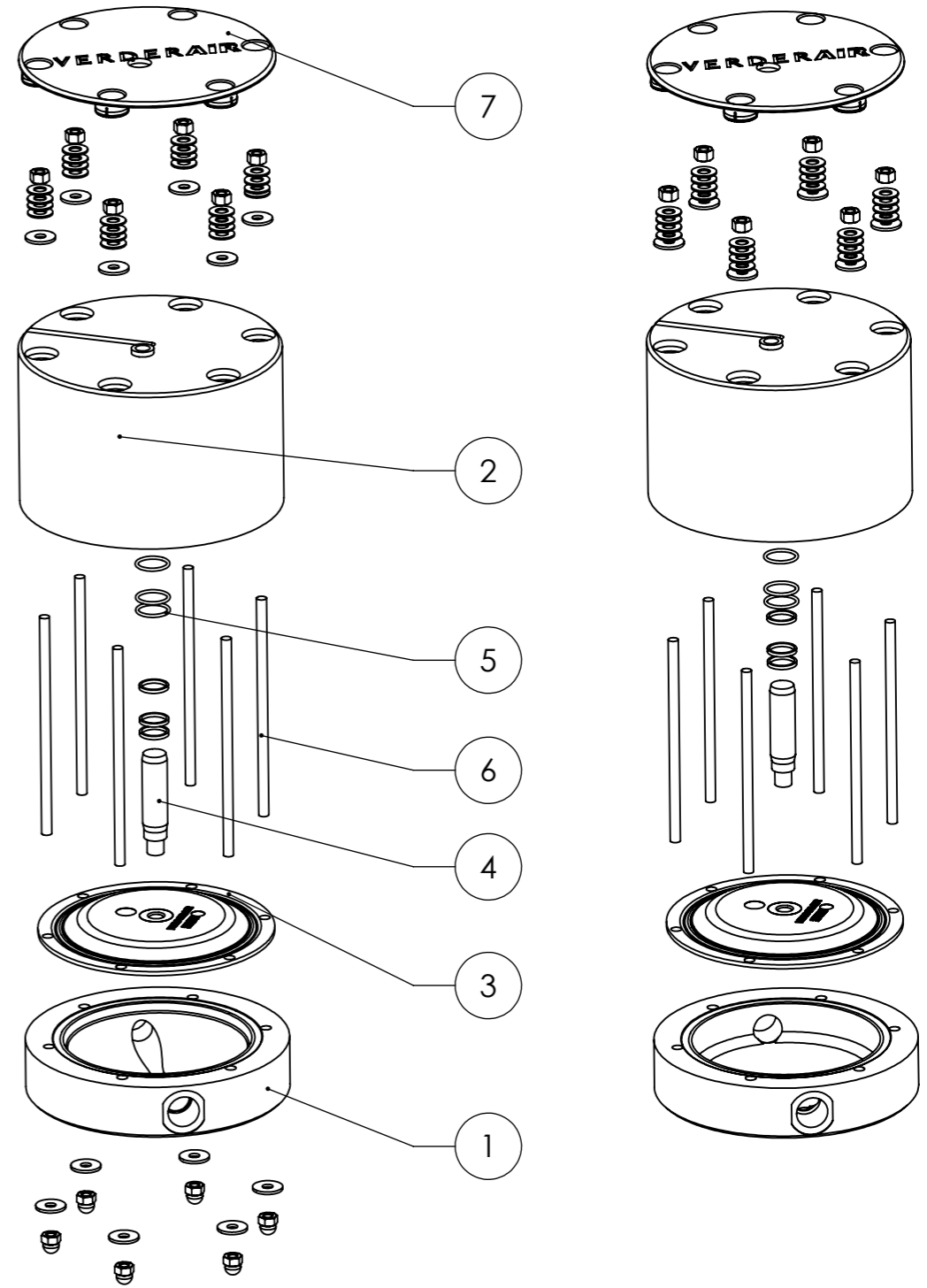
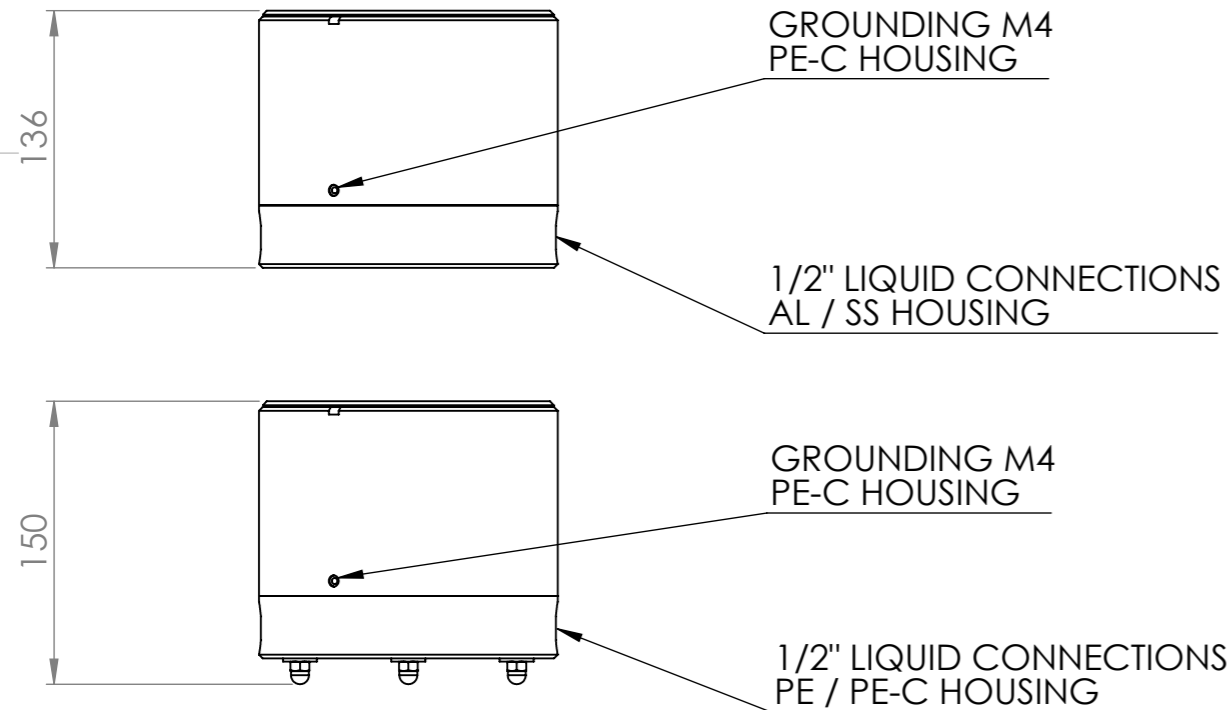


POS.	PART NUMBER	PART NAME	QUANTITY
1	6591324	DAMPENER HOUSING PE TN	1
1	6591325	DAMPENER HOUSING PE TB	1
1	6591221	DAMPENER HOUSING PE-C TN	1
1	6591222	DAMPENER HOUSING PE-C TB	1
1	6591223	DAMPENER HOUSING AL TN	1
1	6591224	DAMPENER HOUSING AL TB	1
1	6591225	DAMPENER HOUSING SS TN	1
1	6591226	DAMPENER HOUSING SS TB	1
1	6590885	CENTER SECTION PA6	1
2	6590886	CENTER SECTION PE-C	1
3	6590467	DIAPHRAGM EPDM	1
3	6590468	DIAPHRAGM PTFE	1
4	6590887	DAMPENER SHAFT	1
5	6590890	SHAFT BEARING SET	1
6	6591271	ASSEMBLY PIN PLASTIC SET	6
6	6591272	ASSEMBLY PIN METAL SET	6
7	6590888	CAP	1
7	6590889	CAP CONDUCTIVE	1



COPYRIGHT OF THIS DRAWING IS OWNED BY "VERDER NV"
 COPY OR DISTRIBUTION TO THIRD PARTY IS NOT PERMITTED WITHOUT WRITTEN CONFIRMATION

REMOVE ALL BURRS AND SHARP EDGES
 ALL DIMENSIONS ARE IN MM
 CAD GENERATED DRAWING, MANUAL CHANGES NOT PERMITTED

TOLERANCING	0 ±0,20
	0,0 ±0,10
	0,00 ±0,05
	0,000 ±0,02

DRAWN	DATE	PRODUCT NUMBER
R. R	2016-01-14	
CHECKED	DATE	PRODUCT NAME
R. A.	2016-01-14	PD-S15
MATERIAL		
WEIGHT	SCALE	REVISION
	1:4	0.2
SIZE	SHEET	STANDARD SPECIFICATION
A3	1 / 2	

CHANGE NO. DATE

100 mm A3 1:1

VERDEAIR[®]
PURE
 PASSION FOR PUMPS
 www.verderair.com